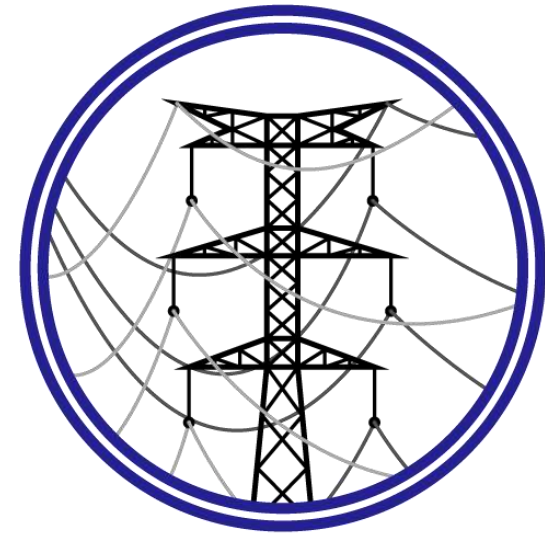




SIYAVUYA POWER PROJECTS "SPP"



COMPANY OVERVIEW

INDEX

CONTACT INFORMATION	Page 2
GROUP STRUCTURE	Page 3
BACKGROUND AND BUSINESS OVERVIEW	Page 4
MISSION, VISION AND SHEQ STATEMENT	Page 5
ISO CERTIFICATION	Page 6
SOCIO-ECONOMIC AND STAFF DEVELOPMENT	Page 7
DETAILED SERVICES	Page 8
FOOTPRINT AND PROJECTS	Page 9
CLIENTELE	Page 10
KEY COMPLETED PROJECTS	Page 11
CURRENT PROJECTS	Page 12
WHY SPP AS A STRATEGIC PARTNER	Page 13
ROUGH TERRAIN PLANT	Page 14
GIN POLE ERECTION	Page 15
COMPLEX CROSSINGS	Page 17
DRILL RIGS	Page 21
STRINGING EQUIPMENT	Page 22
GALLERY	Page 23

CONTACT INFORMATION

CONTACT DETAILS

Graeme Roebuck

(082) 492 – 9782

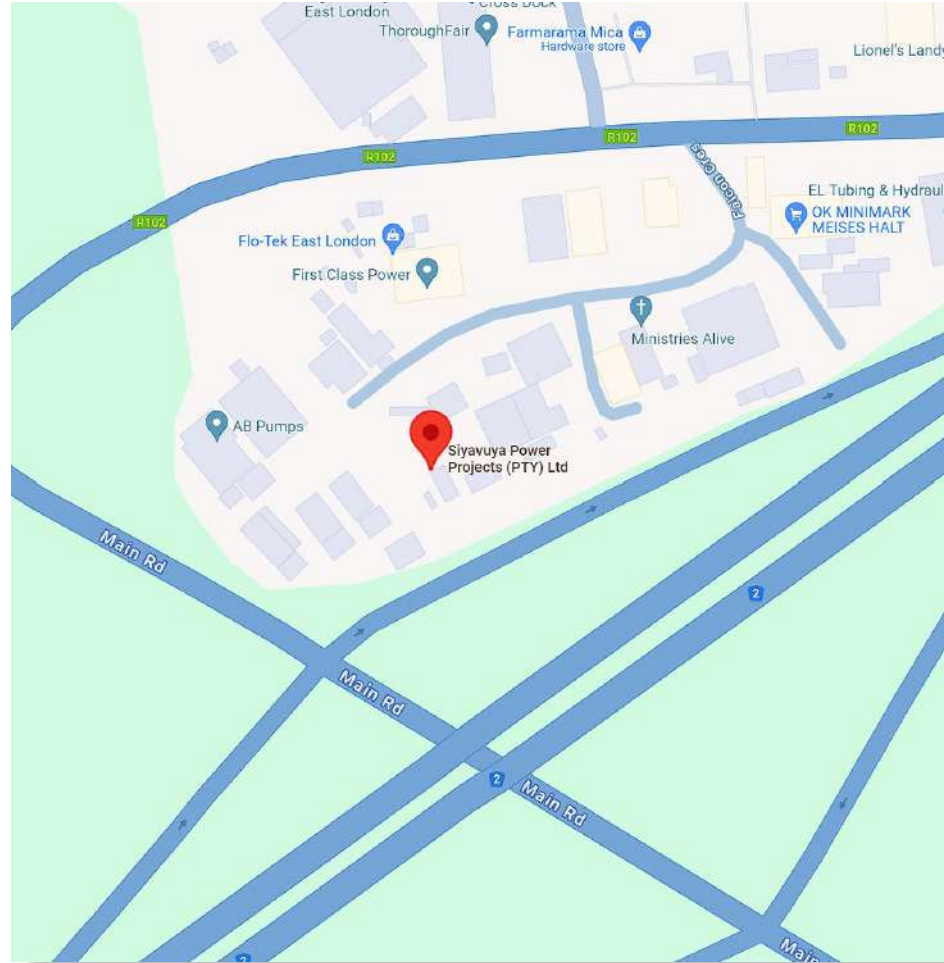
Graeme@siyavuya.co.za

PHYSICAL ADDRESS

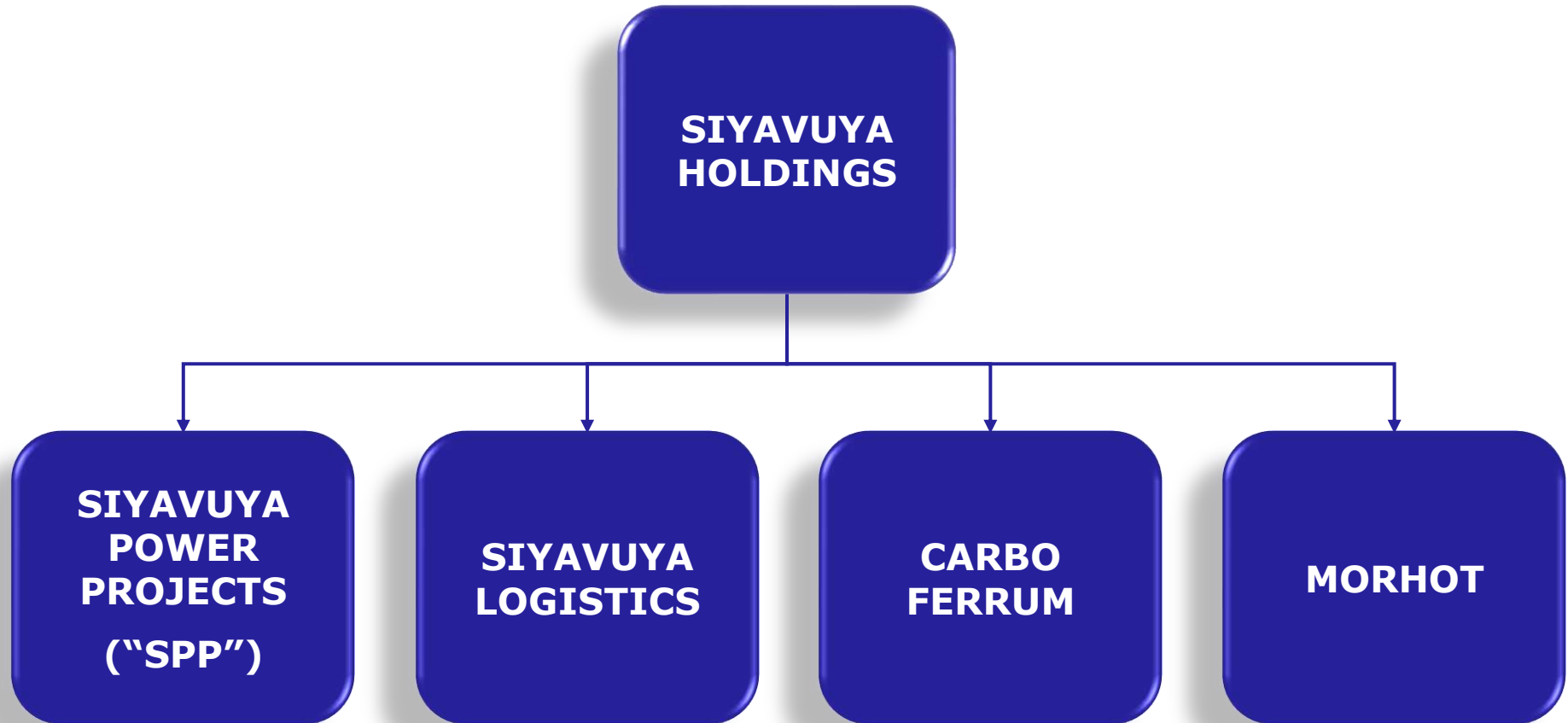
6 Falcon Drive, Meises Halt,
Gonubie,
East London, 5257

POSTAL ADDRESS

PO Box 1138, Caltex Ext,
Gonubie,
East London, 5257



GROUP STRUCTURE



BACKGROUND AND BUSINESS OVERVIEW

- ▶ A South African based -Engineer, Procure and Construct ("**EPC**") or Turn-Key Contractor.
- ▶ In business for more than 22 years
- ▶ Have been awarded contracts of more than R2bn in the previous and current financial year
- ▶ Our ownership diversity has 6 Multi-Skilled Power Line Specialists' shareholders, whom has a combined knowledge and experience in this industry of more than 100 years
- ▶ The only contractor that owns a Steel Manufacturing & Fabrication company: **Carbo Ferrum**
- ▶ The only contractor that owns a Steel Galvanising company: **Morhot Galvanisers**
- ▶ We own vast specialised Plant and Equipment of which 80% is unencumbered
- ▶ We are **51% Black Owned**
- ▶ We have a current overall **Broad-Based BEE** status of **Level 1** and a procurement recognition level of 135%
- ▶ We employ more than 1600 people across our projects
- ▶ Construction Industry Development Board (CIDB) rating of a **9 EP PE** and **8 PE CE**



MISSION, VISION AND SHEQ STATEMENT

- Committed to providing Quality Services and Products within the scope of our operations
- Ensure our resources -including Personnel, Property and Systems, are continually Reviewed & Improved
- Adhere to Contractual & Legal Requirements in Safety, Health, Environmental & Quality
- Quality Management Systems (**ISO: 9001**) – **Certified**
- Environmental Management Systems (**ISO: 14001**) – **Certified**
- Occupational Health & Safety Management Systems (**ISO: 45001**) – **Certified**



ISO CERTIFICATION

bsi.



Certificate of Registration

OCCUPATIONAL HEALTH & SAFETY MANAGEMENT SYSTEM - ISO 45001:2018

This is to certify that:
Siyavuya Power Projects
6 Falcon Drive
Meises Halt Gonubie
East London
Eastern Cape
5257
South Africa

Holds Certificate No: **OHS 802110**

and operates an Occupational Health and Safety Management System which complies with the requirements of ISO 45001:2018 for the following scope:

Providing Engineering, Procurement and Construction (EPC) Services with regards to the construction of transmission and distribution power lines, sub-stations and electrical systems.

For and on behalf of BSI:
Theuns Kotze, Managing Director Assurance - IMETA

Original Registration Date: 2024-07-02
Latest Revision Date: 2024-07-02

Effective Date: 2024-07-02
Expiry Date: 2027-07-01

Page: 1 of 1



...making excellence a habit.™

This certificate was issued electronically and remains the property of BSI and is bound by the conditions of contract. An electronic certificate can be authenticated [online](#). Printed copies can be validated at www.bsigroup.com/ClearIDirectory

Information and Contact: BSI, Kilnburn Court, Davy Avenue, Knowlton, Milton Keynes MK5 8PL, UK. Tel: +44 245 089 3000
BSI Assurance UK Limited, registered in England under number 2905321 at 385 Chiswick High Road, London W4 4AL, UK.
A Member of the BSI Group of Companies.

bsi.



Certificate of Registration

ENVIRONMENTAL MANAGEMENT SYSTEM - ISO 14001:2015

This is to certify that:
Siyavuya Power Projects
6 Falcon Drive
Meises Halt Gonubie
East London
Eastern Cape
5257
South Africa

Holds Certificate No: **EMS 802108**

and operates an Environmental Management System which complies with the requirements of ISO 14001:2015 for the following scope:

Providing Engineering, Procurement and Construction (EPC) Services with regards to the construction of transmission and distribution power lines, sub-stations and electrical systems.

For and on behalf of BSI:
Theuns Kotze, Managing Director Assurance - IMETA

Original Registration Date: 2024-07-02
Latest Revision Date: 2024-07-02

Effective Date: 2024-07-02
Expiry Date: 2027-07-01

Page: 1 of 1



...making excellence a habit.™

This certificate was issued electronically and remains the property of BSI and is bound by the conditions of contract. An electronic certificate can be authenticated [online](#). Printed copies can be validated at www.bsigroup.com/ClearIDirectory

Information and Contact: BSI, Kilnburn Court, Davy Avenue, Knowlton, Milton Keynes MK5 8PL, UK. Tel: +44 245 089 3000
BSI Assurance UK Limited, registered in England under number 2905321 at 385 Chiswick High Road, London W4 4AL, UK.
A Member of the BSI Group of Companies.

bsi.



Certificate of Registration

QUALITY MANAGEMENT SYSTEM - ISO 9001:2015

This is to certify that:
Siyavuya Power Projects
6 Falcon Drive
Meises Halt Gonubie
East London
Eastern Cape
5257
South Africa

Holds Certificate No: **FS 802107**

and operates a Quality Management System which complies with the requirements of ISO 9001:2015 for the following scope:

Providing Engineering, Procurement and Construction (EPC) Services with regards to the construction of transmission and distribution power lines, sub-stations and electrical systems.

For and on behalf of BSI:
Theuns Kotze, Managing Director Assurance - IMETA

Original Registration Date: 2024-07-02
Latest Revision Date: 2024-07-02

Effective Date: 2024-07-02
Expiry Date: 2027-07-01

Page: 1 of 1



...making excellence a habit.™

This certificate was issued electronically and remains the property of BSI and is bound by the conditions of contract. An electronic certificate can be authenticated [online](#). Printed copies can be validated at www.bsigroup.com/ClearIDirectory

Information and Contact: BSI, Kilnburn Court, Davy Avenue, Knowlton, Milton Keynes MK5 8PL, UK. Tel: +44 245 089 3000
BSI Assurance UK Limited, registered in England under number 2905321 at 385 Chiswick High Road, London W4 4AL, UK.
A Member of the BSI Group of Companies.

SOCIO-ECONOMIC AND STAFF DEVELOPMENT

EMPLOYMENT AND JOB CREATION

- Currently employ in excess of 1600 People across our projects
- Company Hiring Policy of Local Community Members on projects in their area, in the capacity of Unskilled Labour / Casuals or Contractors
- Employment Capacity of up to 80 Community Members per project
- Support Communities with Transport & Logistic Contracts on relevant projects

DEVELOPMENT

- SPP has Developed / is Developing Upcoming Contractors through Incubation in past & current projects

TRAINING

- Heavily invested in staff retention
- Upskilling staff to Improve & Expand on New or Current Roles



DETAILED SERVICES

- Construction of Low, Medium & High Voltage Distribution & Transmission Power Lines (11kV, 22kV, 33kV, 66kV, 88kV, 110kV, 132kV, 220kV, 275kV, 400kV, 765kV)
- Complex Crossings (Major Highways, National Roads, Gorges, Rivers, Dams, Live Lines, Railways & Gautrain)
- Use of Technology such as Micropiling, Drones, Lidar Mapping, MS Project, CCS Candy, PLS CAD, PLS Pole)
- Substations, MTS's & Collector Circuits
- Optic Fibre Cables, Underground Cabling & Cable Reticulation
- High Mast Installations
- Auger and Pneumatic Drilling up to 900mm Diameter Holes
- Stringing and Regulating of Overhead Lines
- Plant and Equipment Rentals
- Proof Load Testing up to 600kN (Dead Man Anchors)
- Civil, Mechanical, Structural & Electrical Design Engineering In-House
- Execution of Projects in Rough & Difficult Terrain

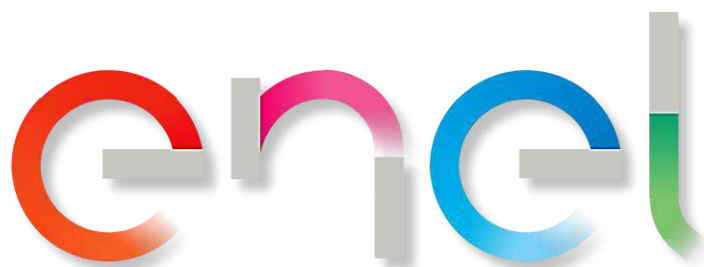


FOOTPRINT AND PROJECTS

Over the years, **SIYAVUYA POWER PROJECTS (“SPP”)** have executed minor and major projects in Eastern Cape, Western Cape, Northern Cape, Gauteng, Free State, Limpopo, Kwazulu-Natal and Mozambique.



CLIENTELE



KEY COMPLETED PROJECTS

- ✓ Juno – Gromis 400kV Line Section C OHL
- ✓ Kusile – Lulamisa 400kV Line Section B OHL
- ✓ Witsieshoek Substation and Turn-in-Lines
- ✓ Moma B – Pilivili 110kV OHL & Substation
- ✓ Ankerlig – Dassenberg 132kV OHL
- ✓ Gromis – Oranjemond 220kV Reconductoring
- ✓ Helios / Loop 8 and Garona / Loop 16, New 50kv OHL (Eskom Self Build) and Associated Transnet Rail Traction Feeder Substations Construction of Traction Feeder Substations
- ✓ To date SPP has Strung 7000km of Conductor



CURRENT PROJECTS

- 🌐 Scatec Kappa MTS, Sonfontein 132kV Switching Station, Grootfontein PV1, PV2 and PV3 IPP Substation, and Kappa 132kV OHL
- 🌐 Mphofu – Chatty 132kV OHL
- 🌐 Neptune – Pembroke 400kV OHL
- 🌐 Medupi – Witkop 400kV OHL
- 🌐 Re-Routing Main 110Kv Supply Power Line
- 🌐 Hector Mersey 400kV Arm – Peak Replacement
- 🌐 Juno / Loop 4 and Aeries / Loop 8, New 50kv OHL (Eskom Self Build) and Associated Transnet Rail Traction Feeder Substations Construction of Traction Feeder Substations



WHY SPP AS A STRATEGIC PARTNER

- ✓ Extensive Experience in OHL and Substation EPC Models
- ✓ In-house Steel Manufacturing Subsidiary
- ✓ In-house Plant and Equipment
- ✓ Strong Leadership and Inhouse Construction Teams
- ✓ Strong Balance Sheet
- ✓ Construction Industry Experience
- ✓ Proven Track Record of Successful Project Delivery



6x6 Bell Mixer Truck & Cat Loader (Owned by SPP)



55T Mobile Crane (Owned by SPP)



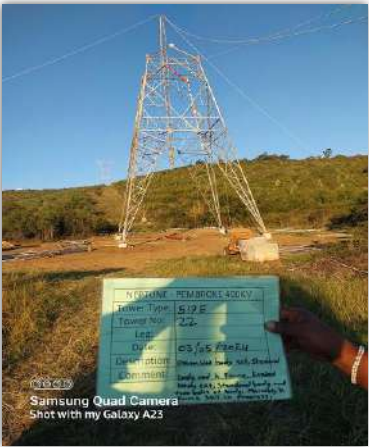
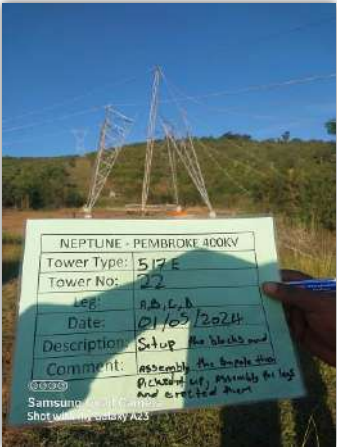
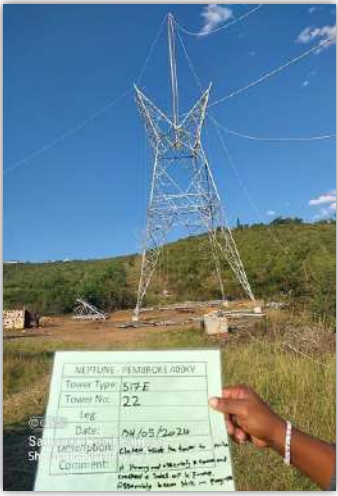
GIN POLE ERECTION WHERE CRANE ACCESS IS LIMITED

Other Towers Erected with GIN Pole on the Neptune Pembroke 400kV Project



GIN POLE ERECTION WHERE CRANE ACCESS IS LIMITED

518C & 517E Towers Erected with GIN Pole on the Neptune Pembroke 400kV Project



COMPLEX CROSSINGS

Stringing & Regulating over a 275kV Line under Live Conditions



COMPLEX CROSSINGS

Stringing & Regulating over the N1 National Highway



COMPLEX CROSSINGS

Stringing & Regulating over the Gautrain, under Live Conditions, while the train was operating



COMPLEX CROSSINGS

Crossing over a Vlei



DRILL RIGS

Pneumatic Drilling at the Scatec Kappa, Sonfontein & Grootfontein Project

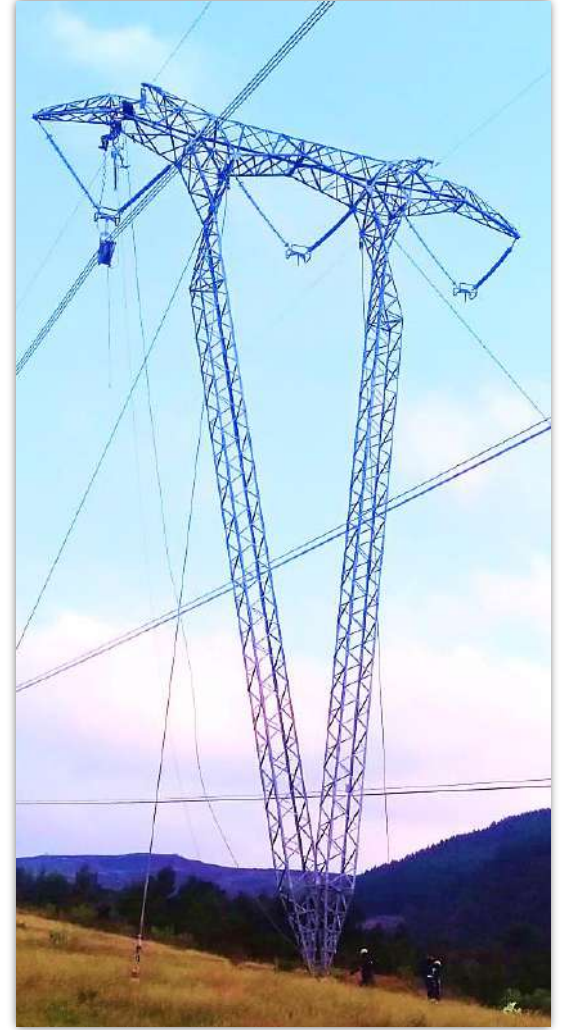


STRINGING EQUIPMENT

Drum Stations with new 19T Tesmec Winch & new 19T Zeck Winch



GALLERY



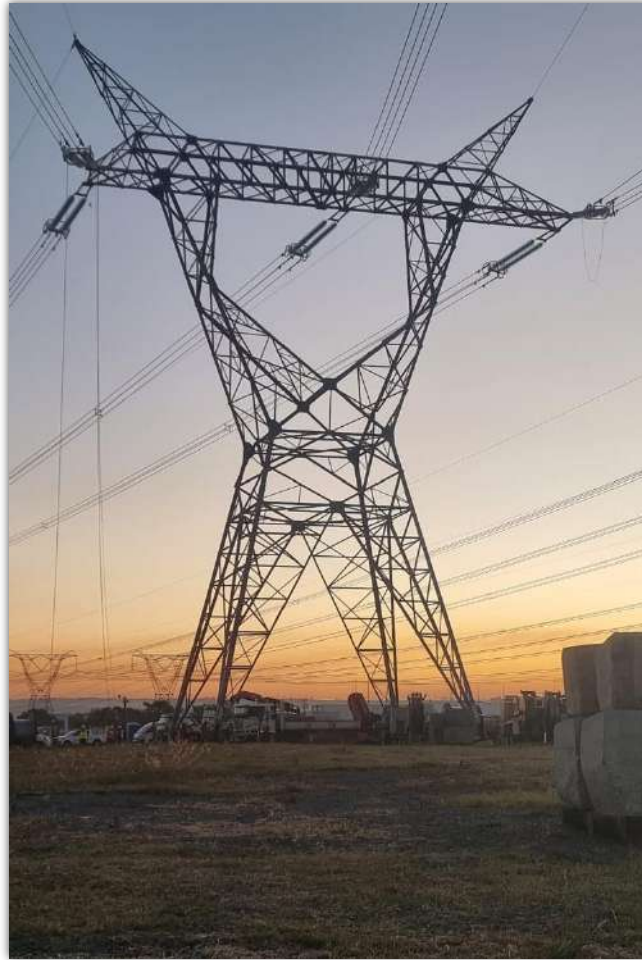
GALLERY



GALLERY



GALLERY



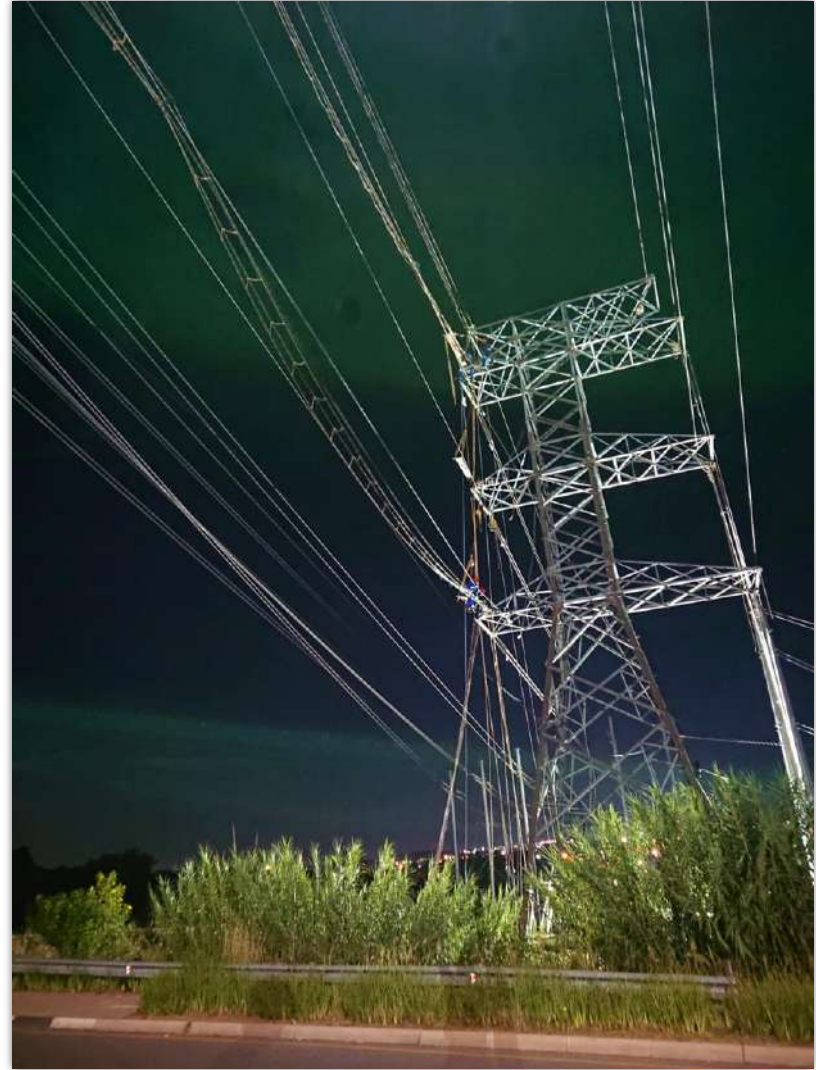
GALLERY



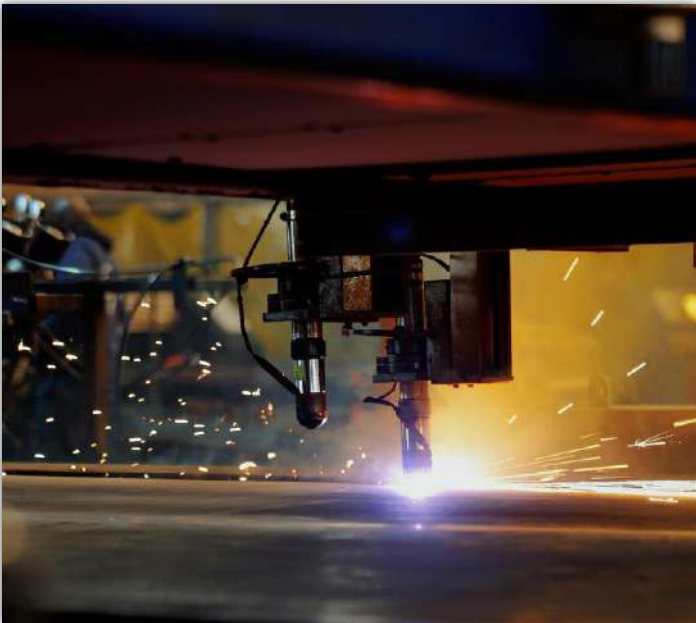
GALLERY



GALLERY



CNC Laser Cutter



CNC Laser Cutting Machine

